

Stiefel Group
Energy and Environmental Technology
Since 1973

COMPANY PROFILE



STIEFEL HOLDING AG
Energy and Environmental Technology

WELCOME TO STIEFEL GROUP

Since inauguration in 1973, the STIEFEL group has been involved in **energy and environmental technology**. The company is owned by the founding family with management now in **the second generation**. **Numerous innovations and patented technologies** in the field of **thermal waste recovery** are sold internationally and projects in plant construction are worldwide. The Headquarters and production center is in Wetzikon, a city in Switzerland.

STIEFEL – a success story for 4 decades

HISTORY

1973	Company inauguration Jakob Stiefel GmbH
1982	Assembling of grate furnace systems
1988	First use of water cooled feeder elements
1993	First use of water cooled grates in Luzern
1999	First complete STIEFEL incineration furnace system in Niederurnen
2002	Inauguration of Japanese licensee
2005	Framework agreement for HERA projects consisting of construction of 5 new incineration plants
2007	Launch of the holding structure
2008	Founding of a subsidiary in Italy
2010	Consolidation in the newly built headquarters
2011	Founding of a subsidiary in India
2014	Reorganisation of Group Structure



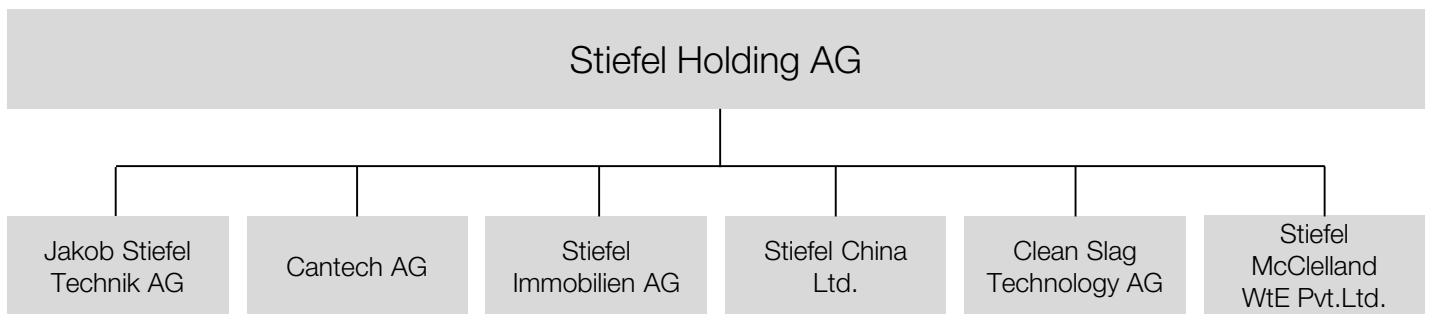
STIEFEL HOLDING AG

Energy and Environmental Technology



Since 2007, the companies of the STIEFEL group are organised within a holding structure.

ORGANISATION



Stiefel Holding AG > Holding company

Stiefel Immobilien AG > Ownership and management of company property

Stiefel Technik AG > Main company project management

Cantech AG > Production company

Stiefel McClelland WtE Pvt. Ltd. > Subsidiary in India

Stiefel China Ltd. > Subsidiary in China

Clean Slag Technology AG > Research company for patented Slag Optimisation Technology

THERMAL RECOVERY OF WASTE

Worldwide, companies are facing ever-growing mountains of waste. Stiefel provides a reliable and clean combustion technology. Besides the combustion system, other plant systems are offered right up to the position of providing the total solution.

Nowadays Stiefel provides consulting services for waste management and treatment and supplies the whole process technology system of a waste incineration plant.

MARKET PRESENTATIONS

STIEFEL is represented by subsidiaries and strategic partnerships in numerous countries. The network allows for optimal support on site. Our highly qualified specialists advise customers all over the world with the necessary know-how and advances in technologies.

STRATEGY

All activities are focused on thermal energy from waste recovery. Expansions into new markets are being achieved directly or through partners. In 2002, STIEFEL allocated a licence to a Japan Corporation, followed by a marketing infrastructure for China. Finally, in 2011, together with a local partner, an Indian subsidiary was set up. Further steps are established with licensees in China and Korea.

Beside the classical waste incineration, the demand for solutions for RDF, biomass and sludge increases, STIEFEL is meeting the challenge and provides the new concepts, and develops them according to the clients' requirements and needs.



STIEFEL HOLDING AG

Energy and Environmental Technology

TECHNOLOGICAL INNOVATION

- > Combustion system for waste and biomass
- > Patented technology, innovative concepts
- > Prototypes, customized solutions
- > Retrofit of third-party systems
- > Engineering, maintenance, spare parts



The furnace is the core component of an incineration plant. STIEFEL developed its own combustion system based on water cooled elements and is since then the technological leader in this field.

The advantage of water cooled systems compared to conventional air cooled systems is a large reduction in heat-related wear and stress, which results in increased operational availability and optimized operational reliability.

Furthermore the water cooling provides various technical options which can be used to optimize the combustion. This combined with the in-house developed combustion control system fully exploits its potential.

Due to the water cooling, a completely new design can be applied to the construction of the feeder or the grate. Large elements can be used and no complicated compensation systems due to thermal expansion are needed.

Beside the classical application of household and industrial waste, RDF and various biomass products can be treated as well.





COMPANY HEADQUARTERS

The 'groundbreaking' for the new company headquarters in Wetzikon, Switzerland, was in April 2009. Since August 2010, the new location has been operational. Spacious offices and up-to-date production halls are now under the same roof. Therefore, improved production times and shorter development times further enhance customer satisfaction.

OFFICES

The latest office technology and modern infrastructure creates the finest working environment for today's and tomorrow's business. The interior design is focused on building team spirit, and assisting the collaboration of ideas for the various activities.



STIEFEL HOLDING AG
Energy and Environmental Technology

PRODUCTION

STIEFEL possesses an own manufacture area at its headquarter. Due to modern CNC-operated production machines and welding robots, a high quality production standard is maintained.

The machinery includes the necessary equipment for cutting, bending, welding, milling and lathe processes. Future generation technology is featured in the water jet cutting machine, with 5 axis for cutting high-tensile sheets, as well in the 6 axis welding robots manufacturing the grate steps and other intricate elements.



STIEFEL WORLDWIDE



In Switzerland:
Stiefel Holding AG
Jakob Stiefel Technik AG
Stiefel Immobilien AG
Cantech AG
Clean Slag Technology AG
Hofstrasse 87
CH-8620 Wetzikon

Tel. +41 (0) 44 576 01 00
info@stiefelgroup.ch



In India:
Stiefel McClelland Waste to Energy Pvt. Ltd.
705, 7th floor, Vindhya complex, Sector-XI,
C.B.D. Belapur Navi Mumbai
IN-Maharashtra 400 614



In Hongkong:
Stiefel China Ltd.
Room A, 7/F, China Overseas Building
139 Hennessy Road
HK-Wanchai, Hongkong



Licensee in Japan:
Sanki Engineering Co. Ltd.
Nihon-Seimei Higashi-Ueno Bldg.
5-2-2, Higashi-Ueno
JP-Taito-Ku, Tokyo 110-0015



Licensee in Korea:
ES CO. Ltd.
Bongmyungdong 37-1
Deokamro 12-gil, Heungdeok-ku
KR-Chungbuk, Cheongju-si 28463



STIEFEL HOLDING AG
Energy and Environmental Technology